

\$1,275,000 - 555 S Park Avenue 202, Breckenridge

MLS® #2353774 RE COLORADO Listing Office: Mountain Living Real Estate, Inc.

\$1,275,000

2 Bedroom, 2.00 Bathroom, 990 sqft
Residential on 0 Acres

Village at Breckenridge, Breckenridge, CO

In Town Breckenridge, Resort Zone, 2bd/2ba Condo! Enjoy slope views and ski in, ski out access to Breckenridge Ski Resort plus generate plenty of short term rental income when you're not here. This exceptional location gives you easy access to top restaurants, bars, shopping and events plus ski rentals and storage and the chair lift that will take you up on Breck's world famous ski slopes. This 2 bedroom condo is on the outside edge of the Plaza, right next to the mountain. You can see the Quicksilver chair and watch the beginners learn to ski right from the condo. The pool, hot tubs, gym and other amenities are right next door. Underground parking takes you from the car to the condo without ever going outside. Having so much fun has never been easier!

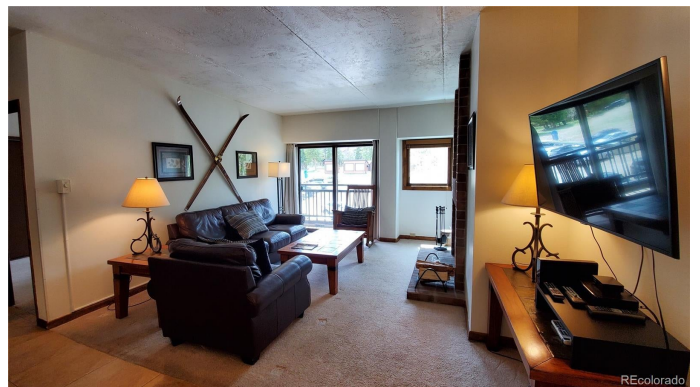
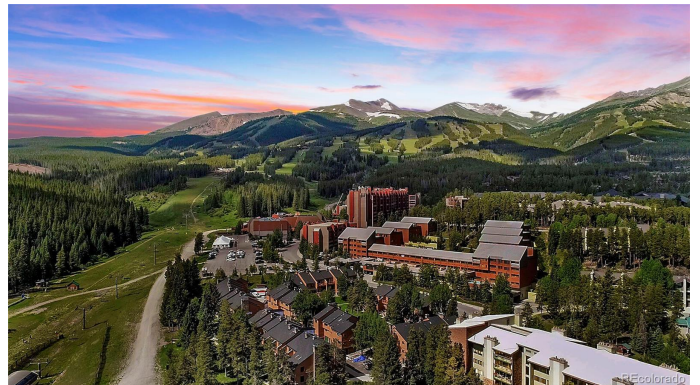
RE COLORADO

Listing Courtesy of Mountain Living Real Estate, Inc.

Built in 1979

Essential Information

MLS® #	2353774
Price	\$1,275,000
Bedrooms	2
Bathrooms	2.00
Full Baths	2
Square Footage	990
Acres	0.00



Year Built	1979
Type	Residential
Sub-Type	Condominium
Status	Active

Community Information

Address	555 S Park Avenue 202
Subdivision	Village at Breckenridge
City	Breckenridge
County	Summit
State	CO
Zip Code	80424

Amenities

Amenities	Business Center, Coin Laundry, Elevator(s), Fitness Center, Front Desk, Laundry, Parking, Pool, Sauna, Spa/Hot Tub
Utilities	Cable Available, Electricity Connected, Internet Access (Wired), Phone Available
Parking Spaces	1
# of Garages	1
View	Mountain(s), Ski Area

Interior

Interior Features	Granite Counters, High Speed Internet, No Stairs, Open Floorplan, Primary Suite, Smoke Free
Appliances	Dishwasher, Microwave, Oven, Refrigerator
Heating	Baseboard, Electric
Cooling	None
Fireplace	Yes
# of Fireplaces	1
Fireplaces	Living Room, Wood Burning
Stories	One

Exterior

Exterior Features	Balcony
Lot Description	Borders National Forest, Near Public Transit, Near Ski Area
Windows	Window Treatments
Roof	Metal

School Information

District	Summit RE-1
Elementary	Breckenridge
Middle	Summit
High	Summit

Additional Information

Date Listed	January 29th, 2025
Zoning	B23



Terms and Conditions: The content relating to real estate for sale in this Web site comes in part from the Internet Data eXchange ("IDX") program of METROLIST, INC., DBA RECOLORADO® Real estate listings held by brokers other than RE/MAX Professionals are marked with the IDX Logo. This information is being provided for the consumers personal, non-commercial use and may not be used for any other purpose. All information subject to change and should be independently verified.

Copyright 2025 METROLIST, INC., DBA RECOLORADO® -- All Rights Reserved 6455 S. Yosemite St., Suite 500 Greenwood Village, CO 80111 USA

Listing information last updated on May 19th, 2025 at 8:18pm MDT