

\$649,990 - 14133 Deertrack Lane, Parker

MLS® #4987730 RE COLORADO Listing Office: Landmark Residential Brokerage

\$649,990

3 Bedroom, 3.00 Bathroom, 1,947 sqft
Residential on 0 Acres

Alder Creek, Parker, CO

The Bristle Cone plan features a versatile mix of private and entertaining spaces. On the main floor, an open-concept layout boasts a well-equipped kitchen with wraparound countertops and a large center island, overlooking a dining area and great room—perfect for everything from game night to hosting family and friends for dinner. Complete the main level with a spacious mud room and 2-bay attached garage, as well as access to the unfinished lower level. Head upstairs and you'll find two secondary bedrooms—sharing access to a full hall bath—a laundry room, and a secluded owner's suite. The owner's suite impresses with a wide walk-in closet and a private bath, complete with dual vanities and a walk-in shower. Timeless white cabinets, quartz countertops throughout, and first floor LVP flooring punctuate an amazing living space! Photos are of a similar home. Ask us about our current incentives.

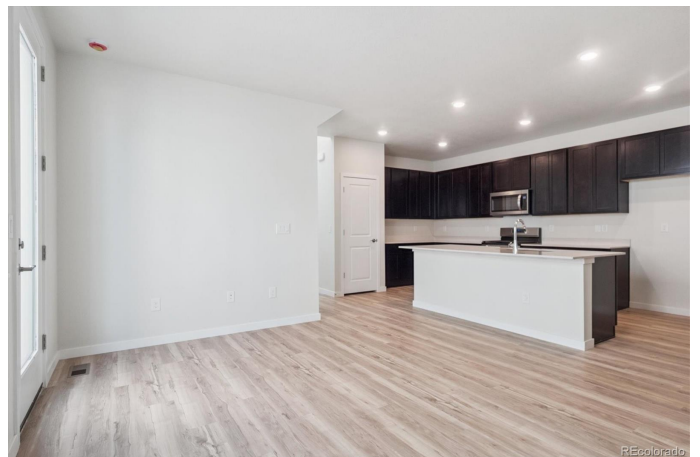
RE COLORADO

Listing Courtesy of Landmark Residential Brokerage

Built in 2025

Essential Information

MLS® #	4987730
Price	\$649,990
Bedrooms	3



Bathrooms	3.00
Full Baths	2
Half Baths	1
Square Footage	1,947
Acres	0.08
Year Built	2025
Type	Residential
Sub-Type	Single Family Residence
Style	Traditional
Status	Active

Community Information

Address	14133 Deertrack Lane
Subdivision	Alder Creek
City	Parker
County	Douglas
State	CO
Zip Code	80134

Amenities

Utilities	Cable Available, Electricity Connected, Internet Access (Wired), Natural Gas Connected, Phone Connected
Parking Spaces	2
Parking	Concrete, Dry Walled
# of Garages	2

Interior

Interior Features	Primary Suite, Quartz Counters, Smart Thermostat, Smoke Free, Walk-In Closet(s)
Appliances	Cooktop, Dishwasher, Disposal, Microwave, Oven, Sump Pump, Tankless Water Heater
Heating	Forced Air, Natural Gas
Cooling	Central Air
Stories	Two

Exterior

Exterior Features	Dog Run
Lot Description	Greenbelt, Landscaped, Sprinklers In Front
Windows	Double Pane Windows

Roof

Composition

School Information

District

Douglas RE-1

Elementary

Mammoth Heights

Middle

Sierra

High

Chaparral

Additional Information

Date Listed

May 28th, 2025

RECOLORADO®

Terms and Conditions: The content relating to real estate for sale in this Web site comes in part from the Internet Data eXchange ("IDX") program of METROLIST, INC., DBA RECOLORADO® Real estate listings held by brokers other than RE/MAX Professionals are marked with the IDX Logo. This information is being provided for the consumers personal, non-commercial use and may not be used for any other purpose. All information subject to change and should be independently verified.

Copyright 2025 METROLIST, INC., DBA RECOLORADO® -- All Rights Reserved 6455 S. Yosemite St., Suite 500 Greenwood Village, CO 80111 USA

Listing information last updated on July 15th, 2025 at 5:03pm MDT