

\$550,000 - 1401 Wewatta Street 102, Denver

MLS® #8793903 RE COLORADO Listing Office: REAL ESTATE REVOLUTION

\$550,000

1 Bedroom, 1.00 Bathroom, 961 sqft

Residential on 0 Acres

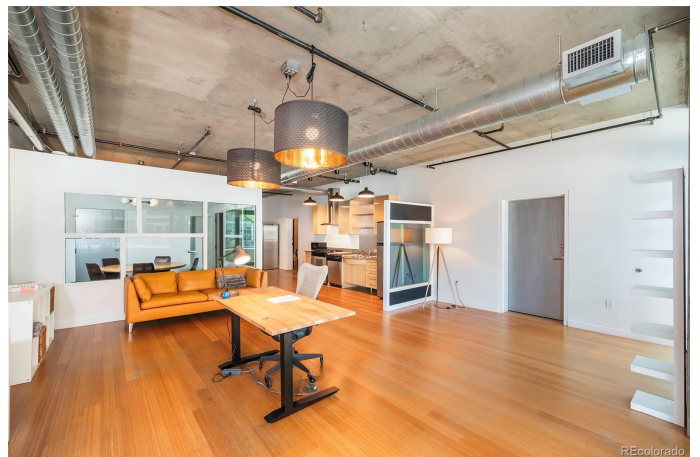
LoDo - Union Station, Denver, CO

Unique opportunity to own a true LIVE/WORK space with exposure/frontage on Wewatta! One of the best locations in Denver across from Ball Arena and within 2 blocks of Union Station. Modern industrial style condo w/ 10' ceilings and open concept! You can live here, run your business from here (currently real estate company), or do BOTH!!! Currently setup as large open space with glass wall office (or bedroom) for conference room/office/bedroom etc. Full kitchen still intact and full bath w/ tub/shower. Laundry hookups and storage in unit. Prime TANDEM 2 CAR parking space on 1st level down PLUS a private storage unit (not in a room full of cages)!!! HOA covers most utilities and offers upscale amenities including a fully-equipped 2,000 sqft gym and yoga studio, business center, 24/7 security, on-site management, bike storage, and package/dry-cleaning delivery service! Amazing location in LoDo/Union Station area on the Cherry Creek greenbelt and jogging/bike paths. WALK to everything including Ball Arena (just across Speer), Union Station, Whole Foods, and all of downtown Denver's bars & restaurants, museums and more!! DO NOT MISS this truly ONCE IN A LIFETIME OPPORTUNITY for an actual LIVE WORK space!!!

RE COLORADO

Listing Courtesy of REAL ESTATE REVOLUTION

Built in 2002



Essential Information

MLS® #	8793903
Price	\$550,000
Bedrooms	1
Bathrooms	1.00
Full Baths	1
Square Footage	961
Acres	0.00
Year Built	2002
Type	Residential
Sub-Type	Condominium
Style	Loft, Urban Contemporary
Status	Active

Community Information

Address	1401 Wewatta Street 102
Subdivision	LoDo - Union Station
City	Denver
County	Denver
State	CO
Zip Code	80202

Amenities

Amenities	Bike Maintenance Area, Bike Storage, Business Center, Elevator(s), Fitness Center, Front Desk, Gated, On Site Management, Security, Storage
Utilities	Cable Available, Electricity Connected, Natural Gas Connected
Parking Spaces	2
# of Garages	2
View	City

Interior

Interior Features	Built-in Features, Granite Counters, High Ceilings, Open Floorplan, Smoke Free, Solid Surface Counters
Appliances	Dishwasher, Disposal, Oven, Range, Range Hood, Refrigerator
Heating	Forced Air
Cooling	Central Air
Stories	One

Exterior

Exterior Features	Gas Valve
Windows	Double Pane Windows, Window Coverings
Roof	Membrane, Tar/Gravel, Unknown

School Information

District	Denver 1
Elementary	Greenlee
Middle	Compass Academy
High	West Leadership

Additional Information

Date Listed	July 14th, 2023
Zoning	R-MU-30

RECOLORADO®

Terms and Conditions: The content relating to real estate for sale in this Web site comes in part from the Internet Data eXchange ("IDX") program of METROLIST, INC., DBA RECOLORADO® Real estate listings held by brokers other than RE/MAX Professionals are marked with the IDX Logo. This information is being provided for the consumers personal, non-commercial use and may not be used for any other purpose. All information subject to change and should be independently verified.

Copyright 2025 METROLIST, INC., DBA RECOLORADO® -- All Rights Reserved 6455 S. Yosemite St., Suite 500 Greenwood Village, CO 80111 USA

Listing information last updated on June 8th, 2025 at 2:48am MDT