

# \$425,000 - 3081 Panorama Court, Johnstown

MLS® #IR1016532

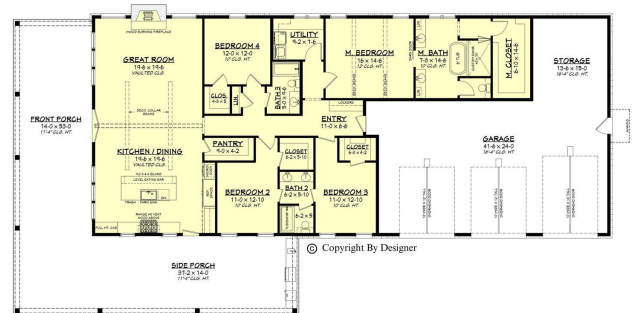
Listing Office: Focal Real Estate Group

**\$425,000**

0 Bedroom, 0.00 Bathroom,  
Land on 1 Acres

Pautler Farms Estates, Johnstown, CO

This Barndominium Luxury home is designed for 4 bedrooms, 3 bathrooms, huge great room, loft, luxury kitchen, and outdoor kitchen with mountain views. This lot is slated for the model home but is still available for purchase for your own dream home until construction begins. You may also buy this lot with the model once final pricing is available. The garage is amazing and big enough to park an RV with 16 foot ceilings. This is not a barn, this is a Luxury Farmhouse open living with large ceilings, and plenty of windows. Barndominium designs have a range of models with garages ranging from 1600 square feet to 3100 square feet to accommodate campers, trailers, boats, tools and more. Why store all of your prized possessions somewhere else? This lot has NO METRO DISTRICT and is .989 acres with city utilities that include, water, sewer, natural gas and high speed internet. This plan is only one idea for this lot in Pautler Farms. You can still choose a design style of your choice, use your builder or one of ours. We have financing options fro Barndominium homes or traditional style if you choose something else. Choices and options are endless. Price listed is only for the land and does not include the house construction or design. Call today with any questions. Seller will consider concessions to help with water tap and closing costs based on a reasonable offer.



REcolorado

**Listing Courtesy of Focal Real Estate**

## Group

### Essential Information

MLS® #	IR1016532
Price	\$425,000
Bathrooms	0.00
Acres	0.92
Type	Land
Sub-Type	Improved Land
Status	Active

### Community Information

Address	3081 Panorama Court
Subdivision	Pautler Farms Estates
City	Johnstown
County	Weld
State	CO
Zip Code	80534

### Amenities

Amenities	Trail(s)
Utilities	Cable Available, Electricity Available, Internet Access (Wired), Natural Gas Available
View	Mountain(s), Plains

### Exterior

Lot Description	Corner Lot, Cul-De-Sac, Level, Open Space
-----------------	---

### School Information

District	Johnstown-Milliken RE-5J
Elementary	Pioneer Ridge
Middle	Milliken
High	Roosevelt

### Additional Information

Date Listed	August 15th, 2024
Zoning	Res

held by brokers other than RE/MAX Professionals are marked with the IDX Logo. This information is being provided for the consumers personal, non-commercial use and may not be used for any other purpose. All information subject to change and should be independently verified.

Copyright 2025 METROLIST, INC., DBA RECOLORADO® -- All Rights Reserved 6455 S. Yosemite St., Suite 500 Greenwood Village, CO 80111 USA

Listing information last updated on June 11th, 2025 at 9:18pm MDT