

\$405,200 - 311 Shoveler Way, Johnstown

MLS® #IR1025865 REALTOR Listing Office: RE/MAX Professionals DTC

\$405,200

2 Bedroom, 3.00 Bathroom, 1,159 sqft
Residential on 0 Acres

Pintail Commons at Johnstown Village, Johnstown, CO

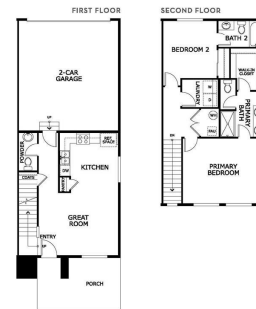
This home is eligible for a below-market fixed interest rate through Landsea Homes' preferred lender, available for a limited time. Terms and conditions apply, contact the onsite sales associate for more information! Welcome to this beautiful 2-bedroom paired home in the brand-new community of Pintail Commons! Ideally located directly across from the community park, this home offers a serene setting with easy access to green spaces and outdoor recreation. The large front porch is perfect for enjoying the fresh air or chatting with neighbors. Inside, you'll find a spacious open-concept main floor with modern finishes throughout, creating a bright and inviting atmosphere. The kitchen, living, and dining areas seamlessly flow together, making it an ideal space for both everyday living and entertaining. The home also features energy-efficient elements, ensuring comfort while keeping utility costs low, and home automation features that allow you to control key aspects of your home with ease. The primary bedroom is a private retreat, featuring a luxurious ensuite bathroom with dual vanity sinks, a walk-in shower, and a large walk-in closet, providing plenty of storage space. Located just minutes from I-25 and the new Ledge Rock shopping center, you'll have quick access to shopping, dining, and entertainment, all while enjoying the peaceful and convenient setting of Pintail Commons. Don't miss your chance to own this fantastic home!



PINTAIL COMMONS

DENALI

1,159 Sq Ft • 2 Bedrooms • 2.5 Bathrooms • 2-Car Garage



2072 HALLGREN PLACE, JOHNSTOWN, CO 80534 | (720) 815-8817
© 2023 Landsea Homes. All rights reserved. This is a conceptual rendering of the proposed home. The actual home may vary in color, finish, and layout. The home is subject to availability and is sold as-is. The home is not to be used for any other purpose without the written consent of Landsea Homes. The home is not to be used for any other purpose without the written consent of Landsea Homes. The home is not to be used for any other purpose without the written consent of Landsea Homes.



REcolorado

**Listing Courtesy of RE/MAX Professionals
DTC**

Built in 2025

Essential Information

MLS® #	IR1025865
Price	\$405,200
Bedrooms	2
Bathrooms	3.00
Full Baths	1
Half Baths	1
Square Footage	1,159
Acres	0.04
Year Built	2025
Type	Residential
Sub-Type	Single Family Residence
Status	Active

Community Information

Address	311 Shoveler Way
Subdivision	Pintail Commons at Johnstown Village
City	Johnstown
County	Weld
State	CO
Zip Code	80534

Amenities

Amenities	Park
Utilities	Cable Available, Electricity Available, Internet Access (Wired)
Parking Spaces	2
Parking	Oversized Door
# of Garages	2

Interior

Interior Features	Eat-in Kitchen, Open Floorplan, Pantry, Walk-In Closet(s)
Appliances	Dishwasher, Disposal, Microwave, Oven
Heating	Heat Pump
Cooling	Central Air

Stories	Two
Exterior	
Windows	Double Pane Windows
Roof	Composition

School Information

District	Johnstown-Milliken RE-5J
Elementary	Other
Middle	Milliken
High	Roosevelt

Additional Information

Date Listed	February 5th, 2025
Zoning	RES

RECOLORADO® Terms and Conditions: The content relating to real estate for sale in this Web site comes in part from the Internet Data eXchange ("IDX") program of METROLIST, INC., DBA RECOLORADO® Real estate listings held by brokers other than RE/MAX Professionals are marked with the IDX Logo. This information is being provided for the consumers personal, non-commercial use and may not be used for any other purpose. All information subject to change and should be independently verified.

Copyright 2025 METROLIST, INC., DBA RECOLORADO® -- All Rights Reserved 6455 S. Yosemite St., Suite 500 Greenwood Village, CO 80111 USA

Listing information last updated on July 10th, 2025 at 8:33am MDT