

# \$599,990 - 13755 W 65th Drive, Arvada

MLS® #IR1032418

Listing Office: Resident Realty

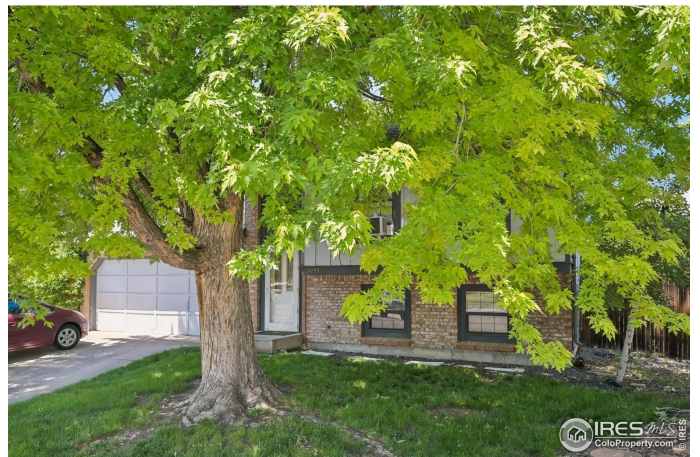
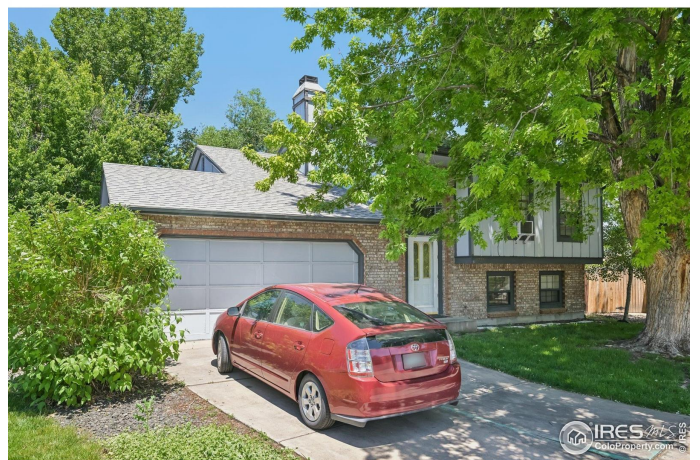
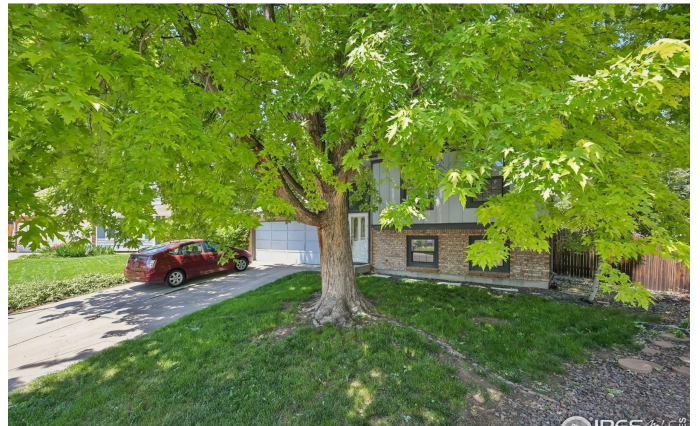
## \$599,990

4 Bedroom, 2.00 Bathroom, 1,745 sqft

Residential on 0 Acres

Maple Ridge, Arvada, CO

Back on Market! Seller willing to negotiate home improvement with full price offer. Welcome to this beautifully maintained home in the desirable neighborhood of Maple Ridge. Refreshed with newly painted cabinetry and situated on a HUGE lot, this home features four bedrooms and two baths, offering flexible living spaces for every lifestyle. Need room to park your RV or Utility vehicles? Access the backyard via a gate that allows for parking in the expansive yard. The home backs to walking trails, offering additional privacy! New hardwood floors and carpet. High ceilings with ample natural sunlight lends an open and airy feel to the living areas and bedrooms. Two bedrooms on the upper level and two additional bedrooms on the lower level allow for both privacy and family living. A rare find in Arvada, the LARGE, level yard provides plenty of space for outdoor activities, gardening, or simply relaxing in a peaceful setting on the back patio among mature trees and landscaping. A separate dog-run in the back yard has housed rabbits, chickens and even a miniature horse in the past! The quiet neighborhood is perfect for those seeking tranquility while still being close to local parks, shopping, dining, and excellent schools. Don't miss the opportunity to make this charming home your own and enjoy everything this wonderful Arvada community has to offer! Buyer and Buyer's Agent to confirm room measurements, schools and square footage totals. Seller is motivated!



REcolorado

## **Listing Courtesy of Resident Realty**

Built in 1984

### **Essential Information**

MLS® #	IR1032418
Price	\$599,990
Bedrooms	4
Bathrooms	2.00
Full Baths	1
Square Footage	1,745
Acres	0.22
Year Built	1984
Type	Residential
Sub-Type	Single Family Residence
Style	Contemporary
Status	Active

### **Community Information**

Address	13755 W 65th Drive
Subdivision	Maple Ridge
City	Arvada
County	Jefferson
State	CO
Zip Code	80004

### **Amenities**

Utilities	Natural Gas Available
Parking Spaces	2
Parking	RV Access/Parking
# of Garages	2
View	Mountain(s)

### **Interior**

Appliances	Dishwasher, Oven, Refrigerator
Heating	Forced Air
Stories	Bi-Level

### **Exterior**

Lot Description	Open Space, Sprinklers In Front
-----------------	---------------------------------

Windows	Window Coverings
Roof	Composition

## School Information

District	Jefferson County R-1
Elementary	Stott
Middle	Oberon
High	Arvada West

## Additional Information

Date Listed	April 29th, 2025
Zoning	R

RECOLORADO®

Terms and Conditions: The content relating to real estate for sale in this Web site comes in part from the Internet Data eXchange ("IDX") program of METROLIST, INC., DBA RECOLORADO® Real estate listings held by brokers other than RE/MAX Professionals are marked with the IDX Logo. This information is being provided for the consumers personal, non-commercial use and may not be used for any other purpose. All information subject to change and should be independently verified.

Copyright 2025 METROLIST, INC., DBA RECOLORADO® -- All Rights Reserved 6455 S. Yosemite St., Suite 500 Greenwood Village, CO 80111 USA

Listing information last updated on July 16th, 2025 at 9:19am MDT